

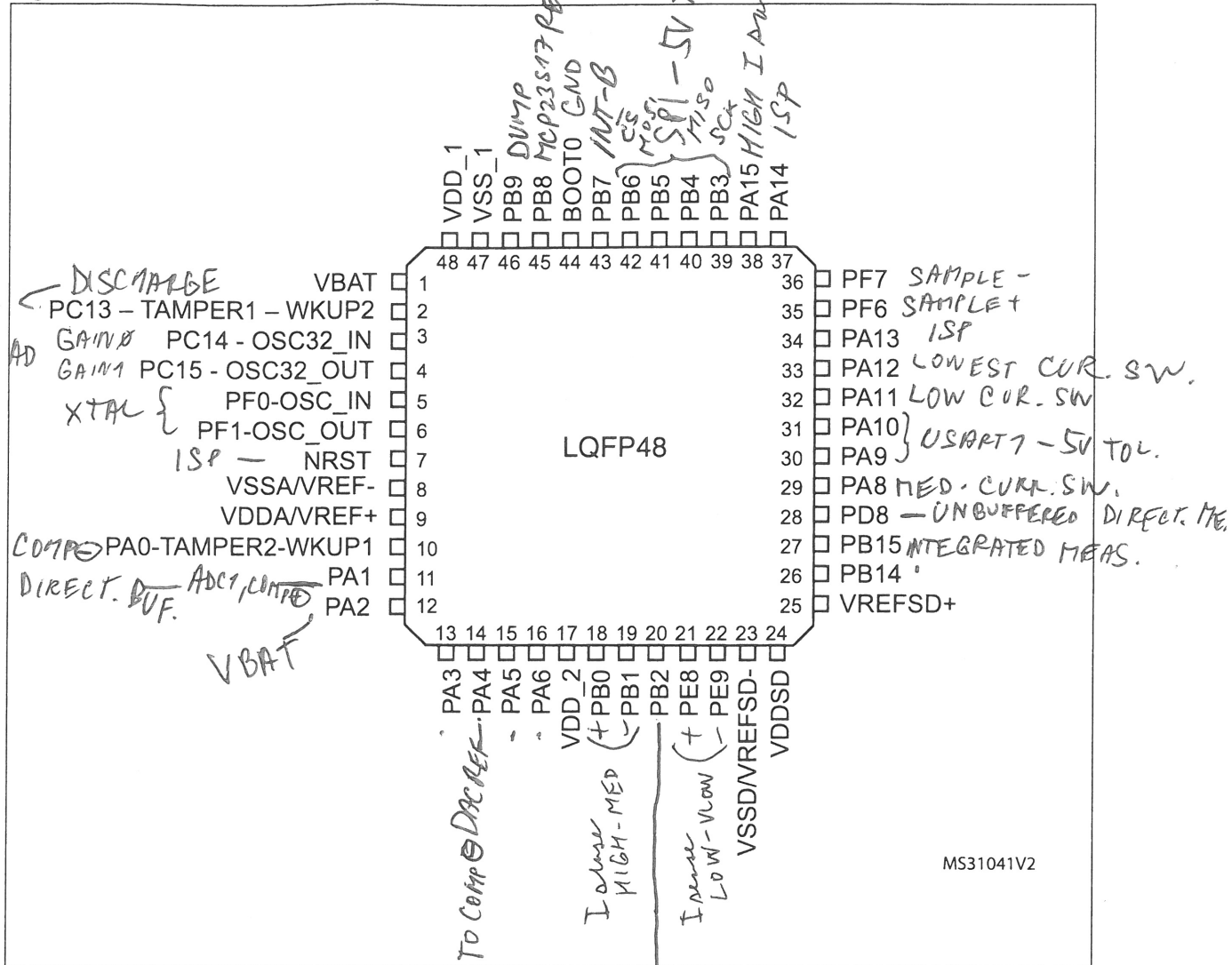
MILLIOMM METER - PROCESSOR PINOUT

STM32F37x

Pinouts and pin description

4 Pinouts and pin description

Figure 2. STM32F37x LQFP48 pinout

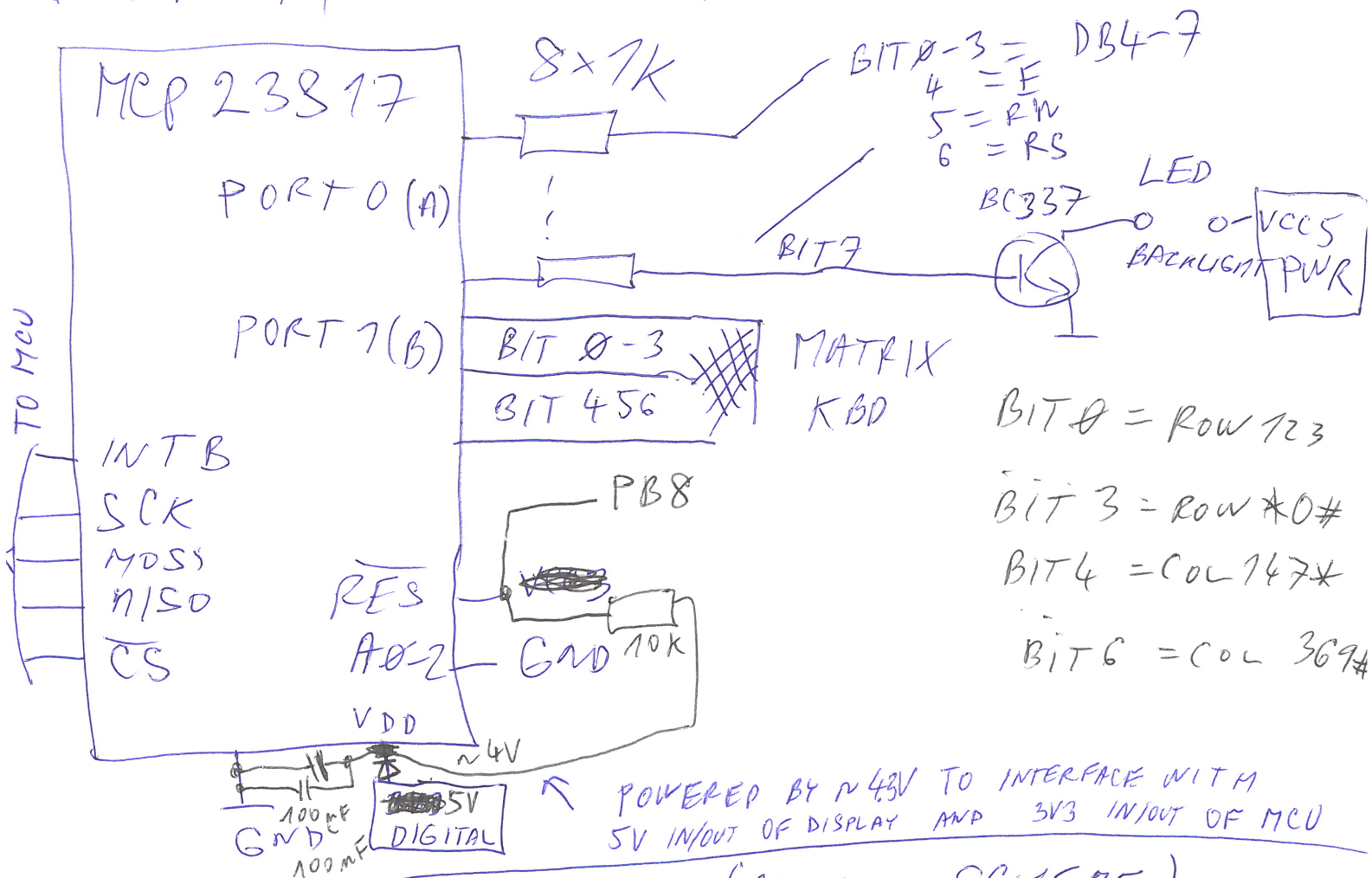


PD8 = SD3 INGP
 PB15 = SD3 7P
 PB2 = ~~SD1 4P~~
 SD2 6P
 PB0-1 = SD1 6 DIF
 PE8-9 = SD1 8 D1

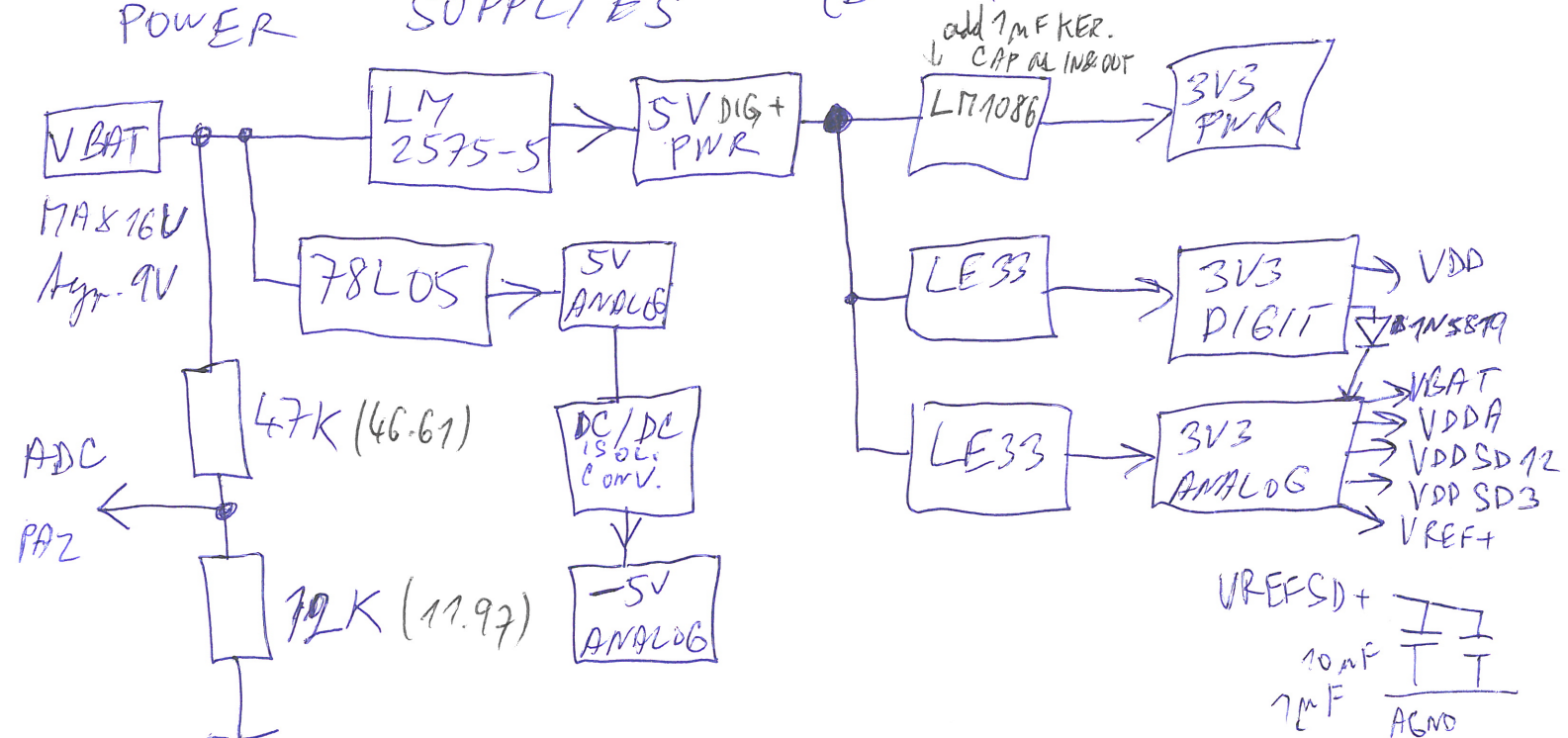


MILLI OHM METER

DISPLAY + KEYBOARD :

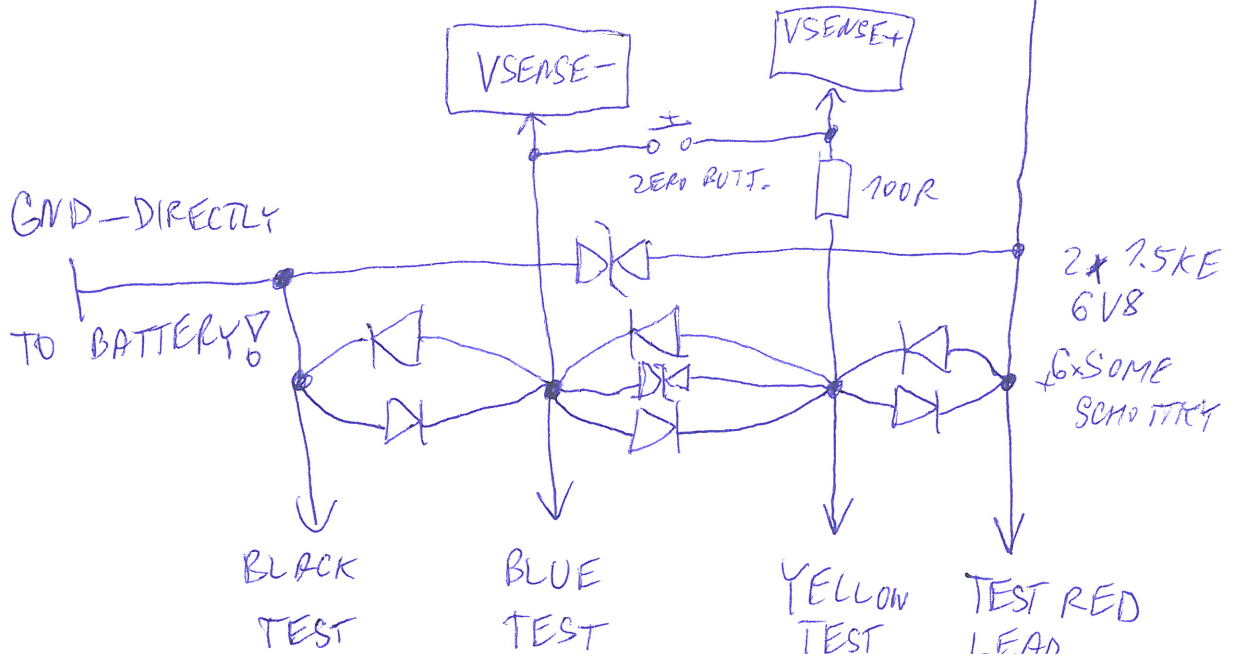
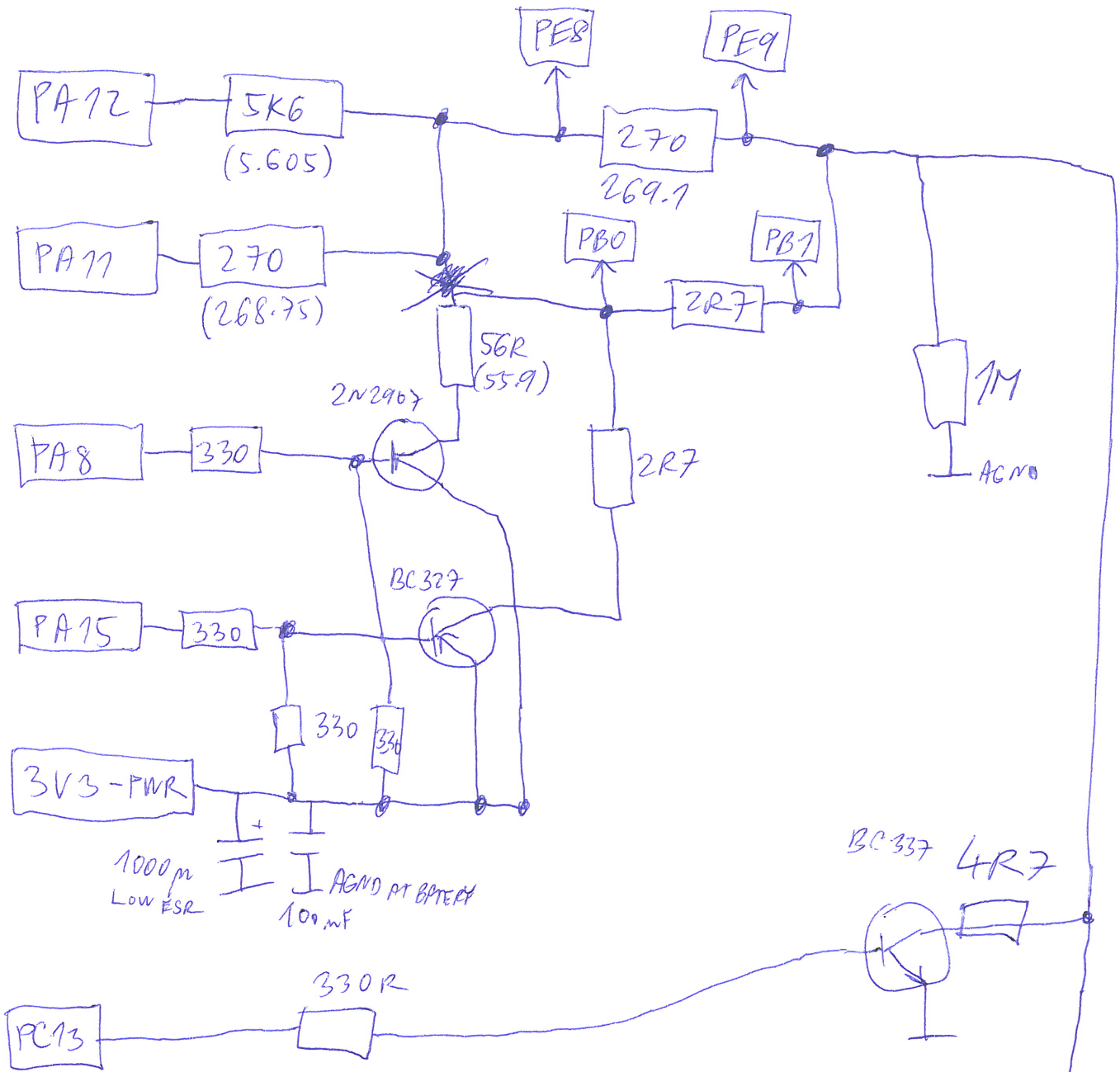


POWER SUPPLIES (BLOCK SCHEME)

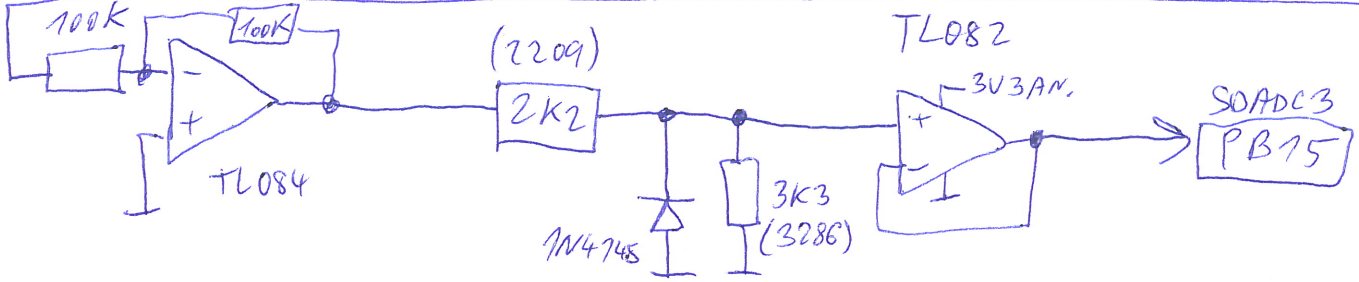
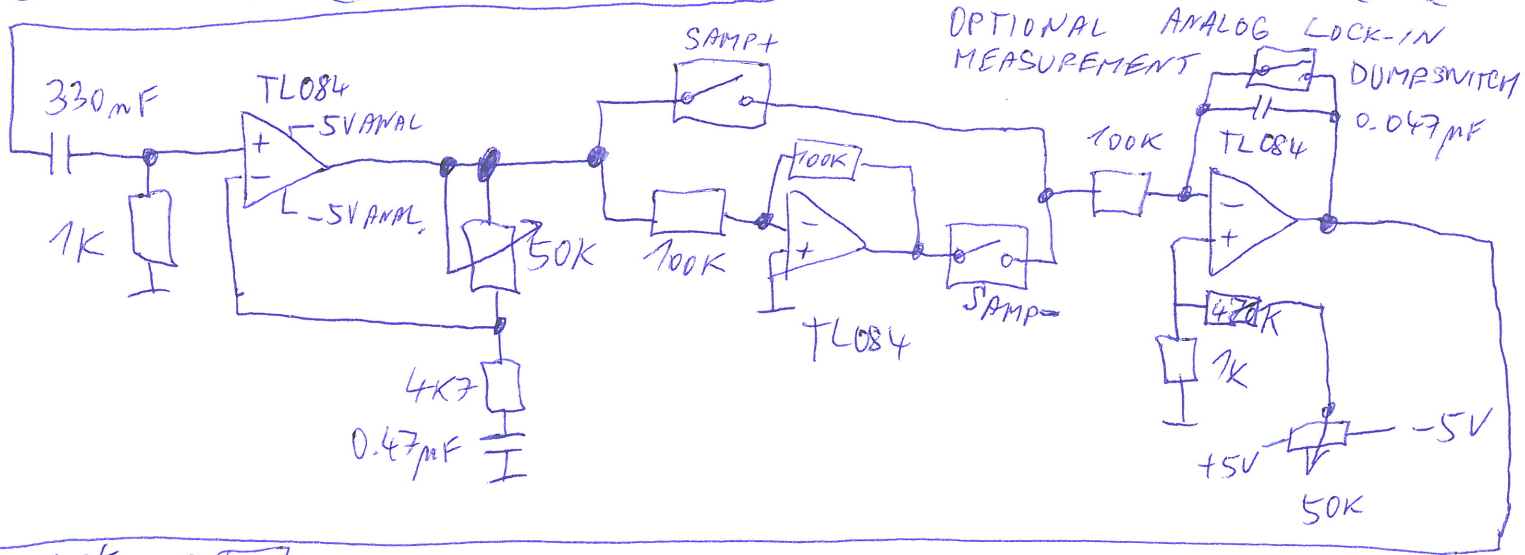
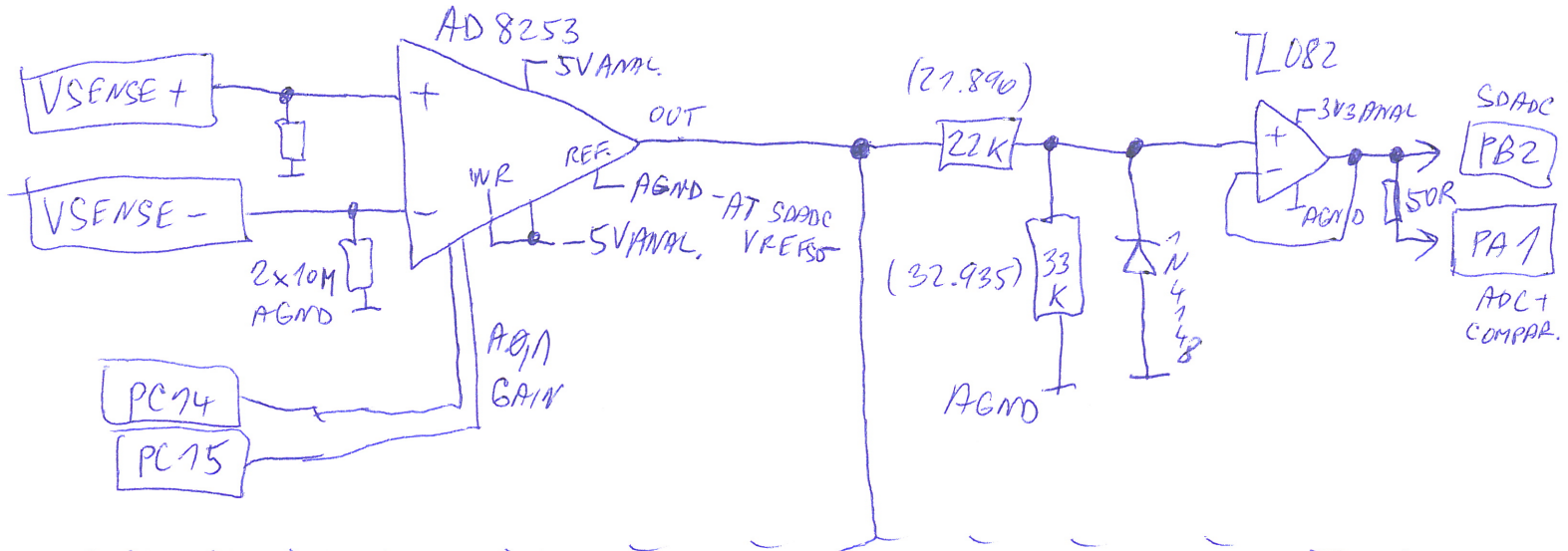


CONNECTIONS ACCORDING TO DATASHEETS,
100mF AT POWER PINS OF CPU, ETC.

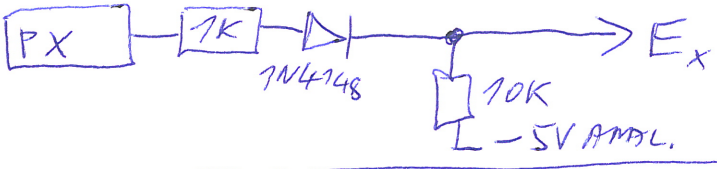
MILLI OHM METER - CURRENT SWITCHES



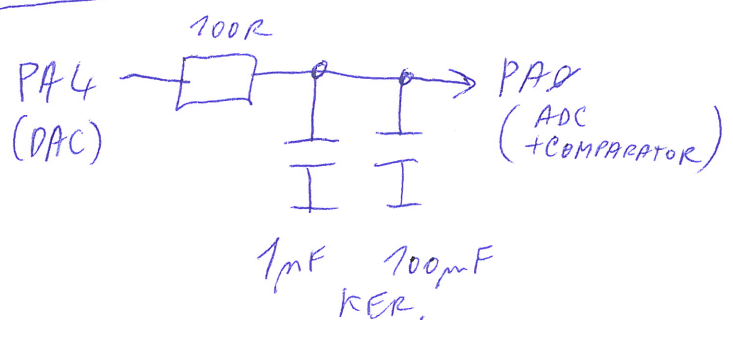
MILLIOMM METER - MEASUREMENT CIRCUITS



SWITCHES: MEF4066, POWERED BY +5V ANAL, -5V ANAL.
 E-INPUTS OF SWITCHES:



PB9 = DUMP
 PF7 = SAMPLE -
 PF6 = SAMPLE +



ON = LOW-Z + HI LEVEL
 OFF = HI-Z